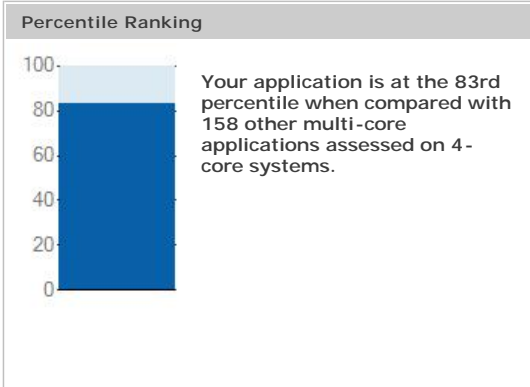




### Software Assessment Report for Multi-core

Product: MediaCoder

Project: MediaCoder Multi-Task



**Your System Information**

Processor: I64 Family 6 Model 15 Stepping 11 Intel(R) Core(TM)2 Quad CPU Q6600 @ 2.40GHz

Operating System: Microsoft Windows 7 (build 7600), 64-bit

Cores: 4

Sockets: 1

Logicals: 4

Tool Name: Intel(R) Concurrency Checker

Tool Version: 3.5.0.16

### Results and Recommendations

This information reflects data measured during your software assessment on Wednesday, August 18, 2010 16:55:35.

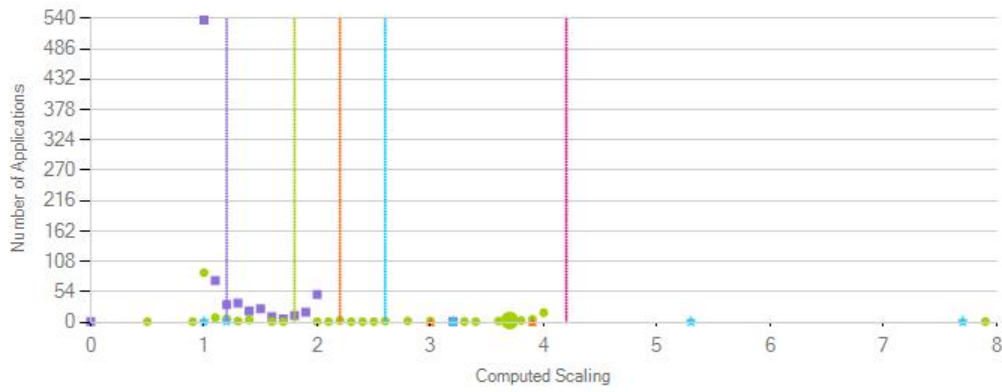
Measured Item	Measured Value	Suggested Min. Value	Recommended Action
<i>Computed Scaling</i> is the average number of threads (or processes) that could have run during your assessment. It predicts the performance improvement factor when your application is run on a multi-core system, compared to a single-core system.	3.71	1.8 or higher	N/A

### Comparative Results

**Computed Scaling Assessment**

This information reflects your software assessment results along with the results of other similar member applications submitted.

Your Computed Scaling value is 3.7. ● is your result.



**Suggested Minimum Values for Computed Scaling**

■ 2 Cores	- - - 1.2 suggested minimum value
● 4 Cores	- - - 1.8 suggested minimum value
▲ 6 Cores	- - - 2.2 suggested minimum value
★ 8 Cores	- - - 2.6 suggested minimum value
◆ 16 Cores	- - - 4.2 suggested minimum value

**Workload Measurements**

**Workload Concurrency**

Elapsed time: 30 seconds  
 Parallel time: 100.00 %

	Minimum	Average	Maximum
CPU Utilization Percentage	100.00	100.00	100.00
Concurrency Level	2	4.04	6

This report and the performance tests and ratings contained herein are for the internal use only by the Intel® Software Partner Program member to assist in the software development process of software products. This report is for internal use only. The assessment data contained in this report was determined by performance tests and ratings measured using specific computer systems and/or components conducted by and provided by the Software Partner Program member and has not been verified by Intel Corporation. Intel does not control or audit the design or implementation of the assessment conducted by the Software Partner Program member.

INTEL ASSUMES NO LIABILITY WHATSOEVER FOR THE CONTENT OF THE SOFTWARE ASSESSMENT REPORT AND INTEL DISCLAIMS ANY EXPRESS OR IMPLIED WARRANTY, RELATING TO THE ASSESSMENT REPORT, INCLUDING LIABILITY OR WARRANTIES RELATING TO FITNESS FOR A PARTICULAR PURPOSE, MERCHANTABILITY, OR INFRINGEMENT OF ANY PATENT, COPYRIGHT OR OTHER INTELLECTUAL PROPERTY RIGHT.